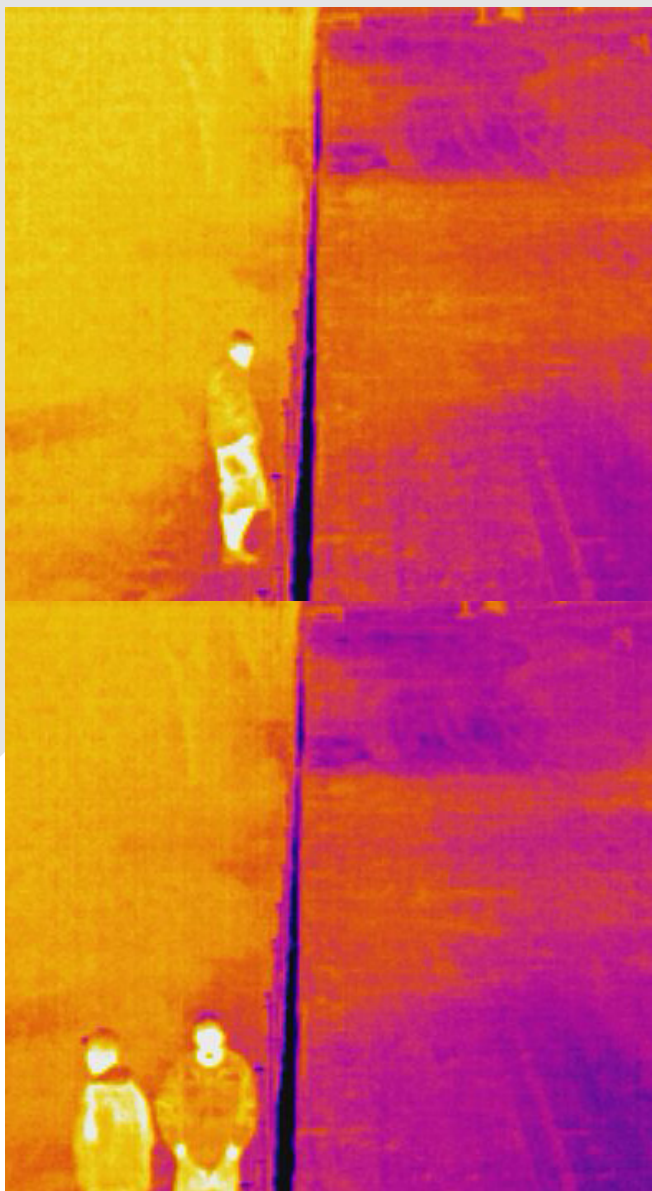


TH2 Solar Powered Thermal Camera System

The Spectur TH2 Solar Powered Thermal Imaging System is the perfect solution for large perimeter fences. They provide accessible and affordable High Tech Thermal Image Monitoring that can be rapidly deployed with no trenches, cabling or power needed. Heat signatures of humans and vehicles are detected over long distances in complete darkness.

Each unit is supplied with a high sensitivity thermal camera as well as a 3.4MP Super HD Optical Camera. The thermal camera is used at night to cover long distances, without the need for artificial light of any type. The standard camera is used for CCTV time lapse and live daytime viewing.



Main Features

- 2 Camera system
- Long range Thermal Imaging Camera 16 degree F.O.V
- 3.4MP HD Low Light Camera FOR LIVE VIEWING. Optional F.O.V
- Totally stand alone. Solar & battery powered
- 3G/4G Connectivity to Spectur's Cloud Management Platform
- Custom aluminum powder coated weatherproof enclosure.
- 100w Solar panel and mounting brackets included
- Secure web login for viewing alarms and live footage. No programs to download
- Remote access via smartphone app (Android or Apple app) PC, Mac multi platform
- Alarms with automatic schedules for on and off times
- Spoken pre-recorded alarm warnings
- Instant notifications
- Optional monitoring station integration
- Advanced in camera motion detection
- Bright 50w motion activated LED light
- Full remote telemetry and programming
- Designed and built in Australia

Specifications

Camera	1x Long Range Thermal Camera and 1 x 3.4MP Optic Camera
Internal Computer	2x Quad Core Processor - 64GB eMMC card 2GB ram. Spectur analytics software. Built in power amplifier
Enclosure	Powder coated custom designed aluminum case IP65 key entry. Built in cooling vents perspex window 42 x 34 x 22cm. Custom mounting bracket included
Light	50w Motion activated LED with vandal proof mesh. Dimensions 280w x 230h x 160d
Solar Panel	100w Panel with mounting bracket 780 x 670 x 3cm . Total weight 8kg
Battery	1 x 12v 100ah Deep cycle lead acid . Weight 24kg
Amp and Speaker	Power 20w. High gain outdoor warning speaker
Communications	Teltonika Multi-Band 3G/4G LTE Router with Dual External Antenna
Integration	ONVIF Compliant. Suitable for integration with most VMS



Spectur offer a range of camera lenses to suit different site locations and conditions. For further advice and assistance please contact your local Spectur Solutions Representative.
1300 802 960 | www.spectur.com.au